

DECLARATION OF PERFORMANCE

DoP number: 171660-B1W1210

Product name:

M50 RUSTICA OUD KEMPISCH

Identification code of product-type is DoP-number



Wienerberger NV

Kapel ter Bede 121 - 8500 Kortrijk

Belgium

Intended use in masonry walls, columns and partitions for:

Assessment and verification of constancy of performance:

Harmonised standard:

Notified body/ies:

unprotected masonry

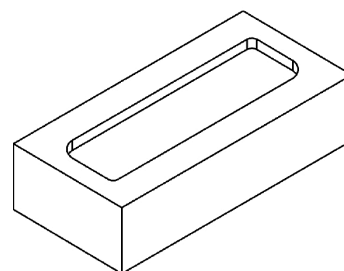
System 2+

EN 771-1:2011+A1:2015

0749

Declared performance/s of a U - masonry unit

| Dimensions and tolerances | | | Tm | Rm |
|-----------------------------|----------|------|------|----|
| Length: | mm | 188 | ± 15 | 30 |
| Width: | mm | 88 | ± 15 | 30 |
| Height: | mm | 48 | ± 15 | 30 |
| Tolerance: | category | Tm | | |
| Range: | category | Rm | | |
| Flatness of bed faces: | mm | NPD | | |
| Plane parallelism: | mm | NPD | | |
| Configuration | | | | |
| Group of the unit: | - | 1 | | |
| Volume of all formed voids: | % | NPD | | |
| Volume of frogs: | % | < 20 | | |



actual configuration may vary slightly

| | | | | |
|---|--------------------------|----------|--|---|
| Density | | | | |
| Gross dry density: | kg/m ³ | 1600 | | |
| Net dry density: | kg/m ³ | 1800 | | |
| Tolerance: | category / % | D1 / 10 | | |
| Compressive strength for Category I product | | | | |
| Perpendicular to bedface: | N/mm ² | 10 | | |
| Perpendicular to header: | N/mm ² | NPD | | |
| Perpendicular to header 2: | N/mm ² | NPD | | |
| Bond strength: | N/mm ² | NPD | | |
| Thermal conductivity λ _{10,dry,unit} : | W/(m·K) | 0,690 | | Determination method EN 1745:2020: S1 |
| Water vapour permeability: | - | μ = 5/10 | | Tabulated min. and max. value according EN 1745 |
| Durability: | category | F2 | | According EN 772-22 |
| Water absorption: | % | 15 | | According EN 772-21 |
| Initial rate of water absorption: | kg/(m ² ·min) | 1-5 | | According EN 772-11 |
| Active soluble salt content: | category | S2 | | According EN 772-5 |
| Moisture movement: | mm/m | NPD | | |
| Reaction to fire: | class | A1 | | EN 13501-1 |
| Dangerous substances: | - | NPD | | |

The performance of the product identified above is in conformity with the set of declared performance/s. This declaration of performance is issued, in accordance with Regulation (EU) No 305/2011, under the sole responsibility of the manufacturer identified above.

Signed for and on behalf of the manufacturer by:

2018-07-01 CEO Caroline Van De Velde

Wienerberger NV
Kapel ter Bede 121 - 8500 Kortrijk
Belgium