

# DECLARATION OF PERFORMANCE

DoP number: 171610-B1W1210

Product name:

RUSTICA WDF OUD KEMPISCH WILDVERBAND

Identification code of product-type is DoP-number



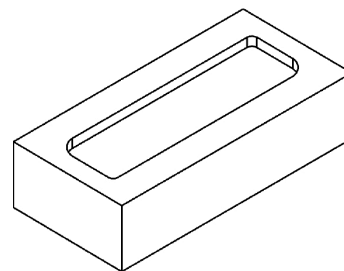
Wienerberger NV  
Kapel ter Bede 121 - 8500 Kortrijk  
Belgium

Intended use in masonry walls, columns and partitions for:  
Assessment and verification of constancy of performance:  
Harmonised standard:  
Notified body/ies:

unprotected masonry  
System 2+  
EN 771-1:2011+A1:2015  
0749

## Declared performance/s of a U - masonry unit

Dimensions and tolerances			Tm	Rm
Length:	mm	215	± 15	30
Width:	mm	102	± 15	30
Height:	mm	65	± 15	30
Tolerance:	category	Tm		
Range:	category	Rm		
Flatness of bed faces:	mm	NPD		
Plane parallelism:	mm	NPD		
Configuration				
Group of the unit:	-	1		
Volume of all formed voids:	%	NPD		
Volume of frogs:	%	< 20		
Density				
Gross dry density:	kg/m <sup>3</sup>	1600		
Net dry density:	kg/m <sup>3</sup>	1800		
Tolerance:	category / %	D1 / 10		
Compressive strength for Category I product				
Perpendicular to bedface:	N/mm <sup>2</sup>	10		
Perpendicular to header:	N/mm <sup>2</sup>	NPD		
Perpendicular to header 2:	N/mm <sup>2</sup>	NPD		
Bond strength:	N/mm <sup>2</sup>	NPD		
Thermal conductivity λ10,dry,unit:	W/(m·K)	0,690		Determination method EN 1745:2020: S1
Water vapour permeability:	-	μ = 5/10		Tabulated min. and max. value according EN 1745
Durability:	category	F2		According EN 772-22
Water absorption:	%	15		According EN 772-21
Initial rate of water absorption:	kg/(m <sup>2</sup> ·min)	1-5		According EN 772-11
Active soluble salt content:	category	S2		According EN 772-5
Moisture movement:	mm/m	NPD		
Reaction to fire:	class	A1		EN 13501-1
Dangerous substances:	-	NPD		



actual configuration may vary slightly

The performance of the product identified above is in conformity with the set of declared performance/s. This declaration of performance is issued, in accordance with Regulation (EU) No 305/2011, under the sole responsibility of the manufacturer identified above.

Signed for and on behalf of the manufacturer by:

2018-07-01 CEO Caroline Van De Velde

Wienerberger NV  
Kapel ter Bede 121 - 8500 Kortrijk  
Belgium