

DECLARATION OF PERFORMANCE

DoP number: 169110-B1W1210

Product name:

WFD 215 FORUM BRANCO GENUANCEERD

Identification code of product-type is DoP-number



Wienerberger

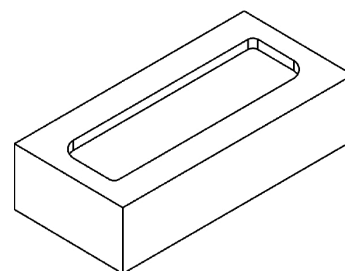
Wienerberger NV
Kapel ter Bede 121 - 8500 Kortrijk
Belgium

Intended use in masonry walls, columns and partitions for:
Assessment and verification of constancy of performance:
Harmonised standard:
Notified body/ies:

unprotected masonry
System 2+
EN 771-1:2011+A1:2015
0749

Declared performance/s of a U - masonry unit

Dimensions and tolerances			T1	R1
Length:	mm	215	± 6	9
Width:	mm	102	± 4	6
Height:	mm	65	± 3	5
Tolerance:	category	T1		
Range:	category	R1		
Flatness of bed faces:	mm	NPD		
Plane parallelism:	mm	NPD		
Configuration				
Group of the unit:	-	1		
Volume of all formed voids:	%	NPD		
Volume of frogs:	%	< 20		
Density				
Gross dry density:	kg/m ³	1800		
Net dry density:	kg/m ³	1950		
Tolerance:	category / %	D1 / 10		
Compressive strength for Category I product				
Perpendicular to bedface:	N/mm ²	25		
Perpendicular to header:	N/mm ²	NPD		
Perpendicular to header 2:	N/mm ²	NPD		
Bond strength:	N/mm ²	NPD		
Thermal conductivity λ_{10} ,dry,unit:	W/(m·K)	0,690		
Water vapour permeability:	-	$\mu = 5/10$		
Durability:	category	F2		
Water absorption:	%	10		
Initial rate of water absorption:	kg/(m ² ·min)	0,300-2		
Active soluble salt content:	category	S2		
Moisture movement:	mm/m	NPD		
Reaction to fire:	class	A1		
Dangerous substances:	-	NPD		



actual configuration may vary slightly

The performance of the product identified above is in conformity with the set of declared performance/s. This declaration of performance is issued, in accordance with Regulation (EU) No 305/2011, under the sole responsibility of the manufacturer identified above.

Signed for and on behalf of the manufacturer by:

2018-07-01 CEO Caroline Van De Velde

Wienerberger NV
Kapel ter Bede 121 - 8500 Kortrijk
Belgium