

# DECLARATION OF PERFORMANCE

DoP number: 12710212-B1W1270

Product name:

WFD 215 BELLE EPOQUE DE NAMUR

Identification code of product-type is DoP-number



Wienerberger NV

Kapel ter Bede 121 - 8500 Kortrijk

Belgium

Intended use in masonry walls, columns and partitions for:

Assessment and verification of constancy of performance:

Harmonised standard:

Notified body/ies:

unprotected masonry

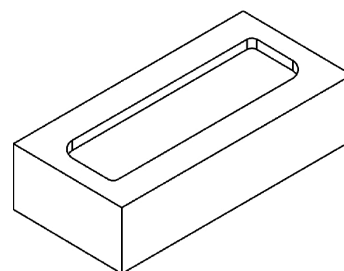
System 2+

EN 771-1:2011+A1:2015

0749

## Declared performance/s of a U - masonry unit

Dimensions and tolerances			Tm	Rm
Length:	mm	215	± 15	30
Width:	mm	102,50	± 10	20
Height:	mm	65	± 5	10
Tolerance:	category		Tm	
Range:	category		Rm	
Flatness of bed faces:	mm		NPD	
Plane parallelism:	mm		NPD	
Configuration				
Group of the unit:	-		1	
Volume of all formed voids:	%		NPD	
Volume of frogs:	%		< 20	
Density				
Gross dry density:	kg/m <sup>3</sup>		1650	
Net dry density:	kg/m <sup>3</sup>		1750	
Tolerance:	category / %		D1 / 10	
Compressive strength for Category I product				
Perpendicular to bedface:	N/mm <sup>2</sup>		12	
Perpendicular to header:	N/mm <sup>2</sup>		NPD	
Perpendicular to header 2:	N/mm <sup>2</sup>		NPD	
Bond strength:	N/mm <sup>2</sup>		NPD	
Thermal conductivity λ <sub>10,dry,unit</sub> :	W/(m·K)		0,690	Determination method EN 1745:2012: S1
Water vapour permeability:	-		μ = 5/10	Tabulated min. and max. value according EN 1745
Durability:	category		F2	According EN 772-22
Water absorption:	%		14	According EN 772-21
Initial rate of water absorption:	kg/(m <sup>2</sup> ·min)		1-5	According EN 772-11
Active soluble salt content:	category		S2	According EN 772-5
Moisture movement:	mm/m		NPD	
Reaction to fire:	class		A1	EN 13501-1
Dangerous substances:	-		NPD	



actual configuration may vary slightly

The performance of the product identified above is in conformity with the set of declared performance/s. This declaration of performance is issued, in accordance with Regulation (EU) No 305/2011, under the sole responsibility of the manufacturer identified above.

Signed for and on behalf of the manufacturer by:

2025-01-31 CEO Caroline Van De Velde

Wienerberger NV  
Kapel ter Bede 121 - 8500 Kortrijk  
Belgium