

DECLARATION OF PERFORMANCE

DoP number: 12452110-B1W1245

Product name:

65MM PELHAM ANTIQUE

Identification code of product-type is DoP-number



Wienerberger NV

Kapel ter Bede 121 - 8500 Kortrijk

Belgium

Intended use in masonry walls, columns and partitions for:

Assessment and verification of constancy of performance:

Harmonised standard:

Notified body/ies:

unprotected masonry

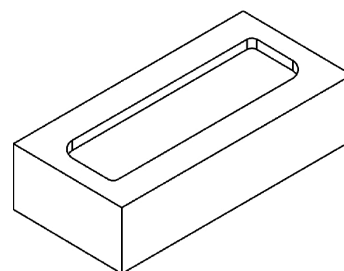
System 2+

EN 771-1:2011+A1:2015

0749

Declared performance/s of a U - masonry unit

Dimensions and tolerances			T1	R1	
Length:	mm	215	± 6	9	
Width:	mm	102	± 4	6	
Height:	mm	65	± 3	5	
Tolerance:	category	T1			
Range:	category	R1			
Flatness of bed faces:	mm	NPD			
Plane parallelism:	mm	NPD			
Configuration					
Group of the unit:	-	1			
Volume of all formed voids:	%	NPD			
Volume of frogs:	%	< 20			
Density					
Gross dry density:	kg/m ³	1650			
Net dry density:	kg/m ³	1700			
Tolerance:	category / %	D1 / 10			
Compressive strength for Category I product					
Perpendicular to bedface:	N/mm ²	25			
Perpendicular to header:	N/mm ²	NPD			
Perpendicular to header 2:	N/mm ²	NPD			
Bond strength:	N/mm ²	NPD			
Thermal conductivity λ _{10,dry,unit} :	W/(m·K)	0,690			Determination method EN 1745:2012: S1
Water vapour permeability:	-	μ = 5/10			Tabulated min. and max. value according EN 1745
Durability:	category	F2			According EN 772-22
Water absorption:	%	14			According EN 772-21
Initial rate of water absorption:	kg/(m ² ·min)	3-8			According EN 772-11
Active soluble salt content:	category	S2			According EN 772-5
Moisture movement:	mm/m	NPD			
Reaction to fire:	class	A1			EN 13501-1
Dangerous substances:	-	NPD			



actual configuration may vary slightly

The performance of the product identified above is in conformity with the set of declared performance/s. This declaration of performance is issued, in accordance with Regulation (EU) No 305/2011, under the sole responsibility of the manufacturer identified above.

Signed for and on behalf of the manufacturer by:

2024-03-08 CEO Caroline Van De Velde

Wienerberger NV
Kapel ter Bede 121 - 8500 Kortrijk
Belgium